

THINK

# SMART

## MEDICAL EDUCATION

### OKLAHOMA PROVIDERS CAN



Follow State opioid prescriber guidelines and take Free CME courses on Addiction



Perform opioid risk assessments and SBIRT before prescribing or refilling prescriptions

### MAT

Get a waiver AND Practice Medication Assisted Treatment for Opioid Use Disorder (OUD)

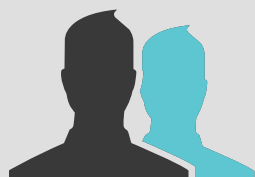


Check the Oklahoma Prescription Monitoring Program before prescribing or refilling schedule II drugs

### OKLAHOMA PATIENTS CAN



Share with providers any personal or family history of drug misuse or abuse, as this can increase the risk of opioid Dependency



Before an injury occurs, name someone trustworthy to act as an accountability partner for taking your pain medicine responsibly



Request the "Lowest strength effective dose" taken over a short period only if pain is intolerable with over-the-counter drugs like NSAID's



Avoid sharing Rx medicine; store and dispose of opioids in a responsible manner to prevent others from misusing them

